



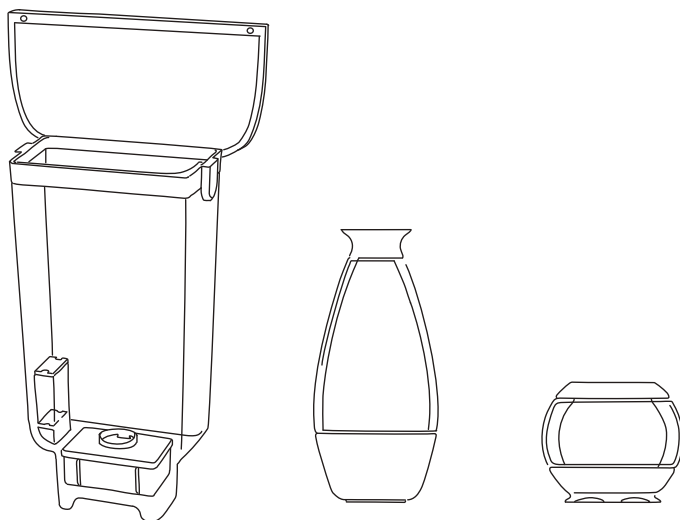
TEFORIA

setup guide + user's manual



Tea Maker Parts

Setting up




1. Rinse

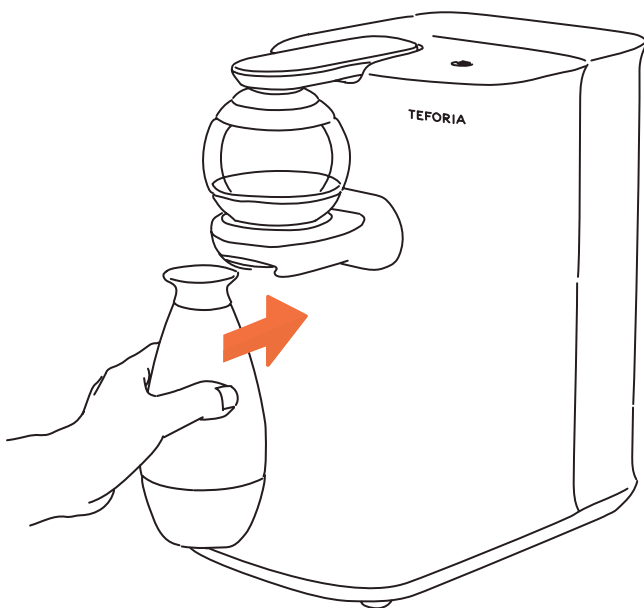
Please use mild dish soap and warm water to clean the Water Reservoir, Carafe, and Infuser before use.



2. Add Infuser


Lift the infusion arm. Align the petals on the bottom of the Infuser with the petals in the Nest. Gently rotate the Infuser clockwise until it locks into place, and lower the arm.

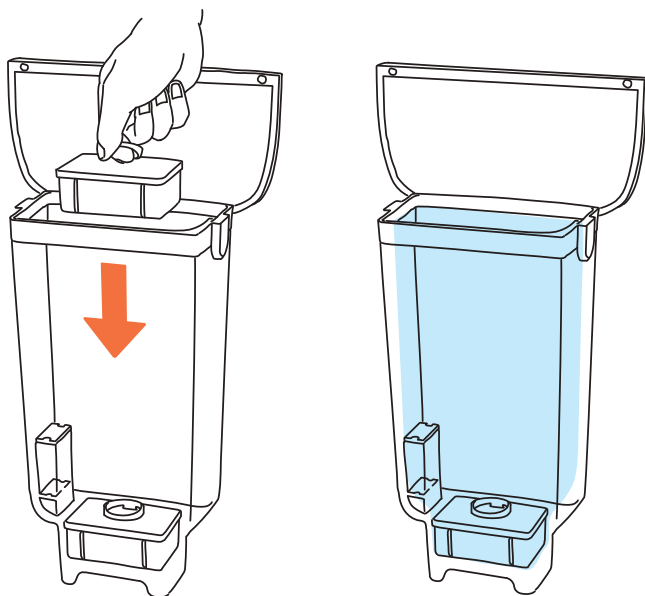
When the Infuser is not properly attached, the  icon will glow red.



3. Add Carafe

With a level motion, glide the Carafe straight into the Tea Maker. You should hear a snap when it's securely in place.

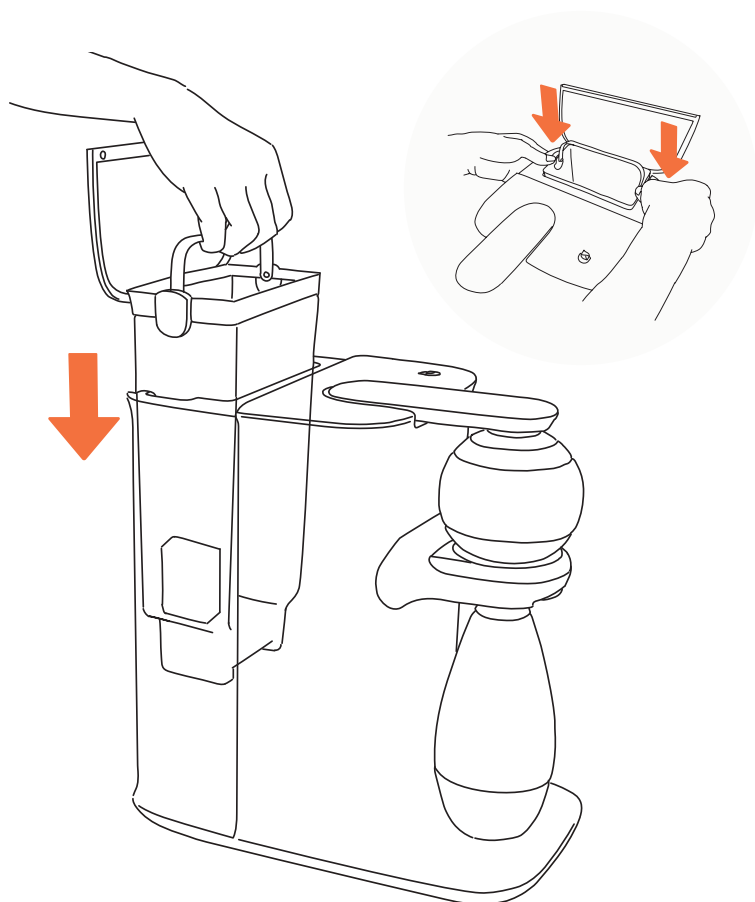
When the Carafe is not properly secured, the  icon will glow red.



4. Install Filter

Open the lid of the Water Reservoir and remove from its bottom the protective red cap. Remove the filter from packaging and slide it into place. Please make sure the name Teforia on the filter **faced outwards** from the Tea Maker. Then fill the Water Reservoir with spring or tap water.

Do not use reverse-osmosis or distilled water.

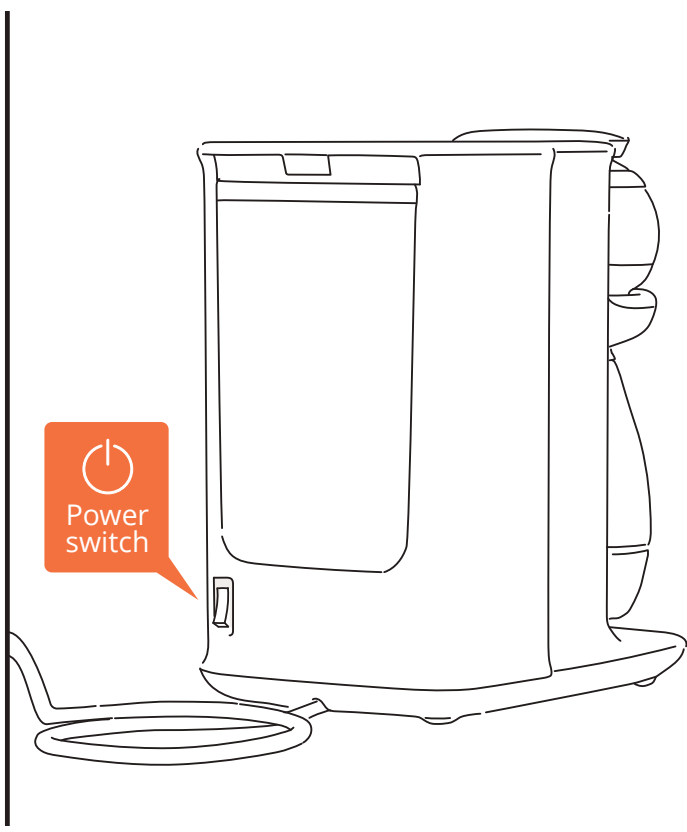


5. Insert Water Reservoir

Remove a protective red cap from the bottom of the Water Reservoir and position it in the back of the Tea Maker by gently pushing down from above.

When the Reservoir is not properly seated, the

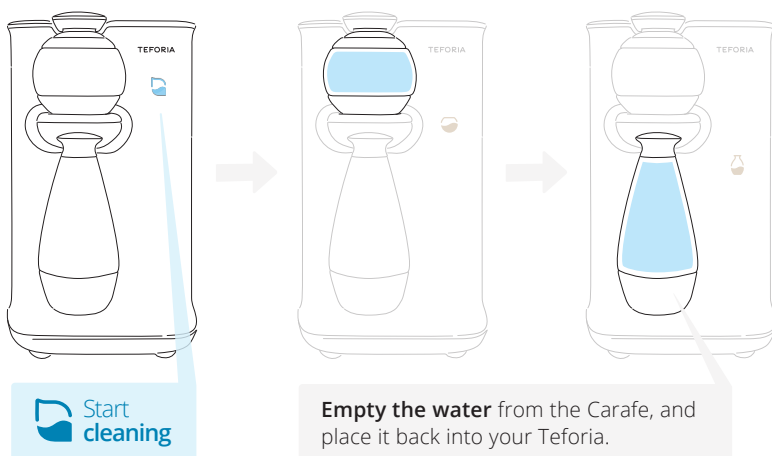
 icon will glow red





6. Turn On



Plug in your Teforia, and turn it on. **The power switch is at the rear of the Tea Maker.** The icons will light in sequence, and your Teforia will chime when it is ready.

① We recommend running a Cleaning Cycle **once a week**.



7. Cleaning Cycle

When you first turn on the Tea Maker, you'll hear a chime and the **Leaf Icon**  will glow blue, indicating that the cleaning cycle is ready to run. **Press the Leaf Icon**  to begin the cleaning cycle, which takes about 5 minutes to complete.

Water will run through the **Infuser** and you'll see its icon  glow. The **Carafe Icon**  will glow next and you'll hear a chime indicating that the Cleaning Cycle is complete.

Making tea



1. Teforia-ready Teas

We hope that you will enjoy samples of Adagio Teas that accompany your Tea Maker. Each box contains a **Teforia-ready label**. When scanned, the chip inside the label tells your Tea Maker to execute a unique steeping recipe.

Please look for more Teforia-ready teas on the Teforia mobile app or online at **teforia.com**

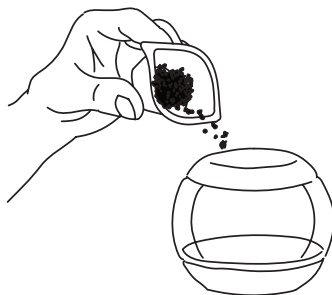


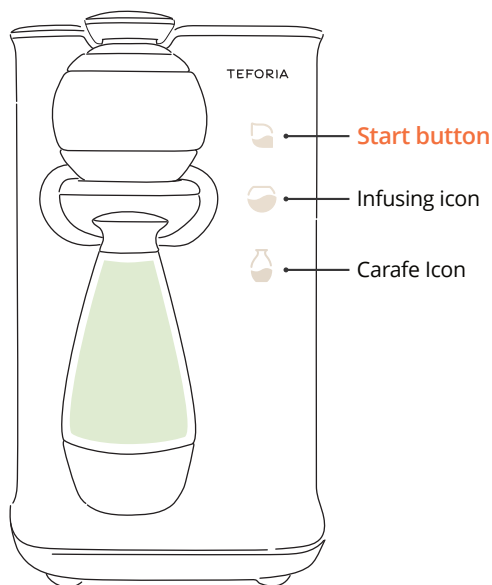
2. How to Make Tea

Hold the box with the “Teforia-ready” label against the Teforia Logo at the top of your Tea Maker. Your Tea Maker will read the tea recipe, the Leaf Icon will glow white and **you’ll hear a chime.**

3. Add Tea

Remove the Infuser from the Tea Maker, add tea leaves, then twist it back onto the Tea Maker.







4. Start Infusing

Press the **Start button**  to begin infusing. You will hear a chime, and the Infusing Icon  will glow.

5. Enjoy Tea

Once tea is done, the **Carafe Icon**  will glow. Enjoy a cup right away, or within the hour. The tea will stay warm in the Carafe for up to sixty minutes.

To infuse the same leaves again, press the Start button . Removing the Infuser will disable this feature.

Teforia Icons

The Infuser icons indicate when and how your Tea Maker is in use and sometimes prompt action. Here's what they mean:

Leaf Icon



Soft Glow: Label scanned and Tea Maker is ready to steep.



Red Glow: The label had been scanned too many times.



Blue Glow: Cleaning cycle is ready to run.



Pulsing Blue Glow: Tea Maker is not connected to WiFi.

Infusing



Soft Glow: The infusion process is under way.



Red Glow: Check that the Infuser is properly secured and the arm is in the proper position.



Blue Glow: Cleaning cycle in progress.

Carafe



Soft Glow: Infusion is complete.



Red Glow: The Carafe is missing or not securely in place.



Blue Glow: Draining or removing water.



Soft Glow: The water level is low. Be sure to add water before the next infusion.

Low Water



Red Glow: The water level is too low to infuse. Refill the Water Reservoir.

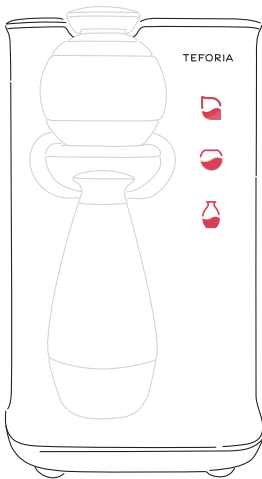
*If the icon remains red with a full reservoir, remove the reservoir and re-seat it, making sure to **secure it firmly**.*



Blue Glow: “Find me” signal.

Internal Error

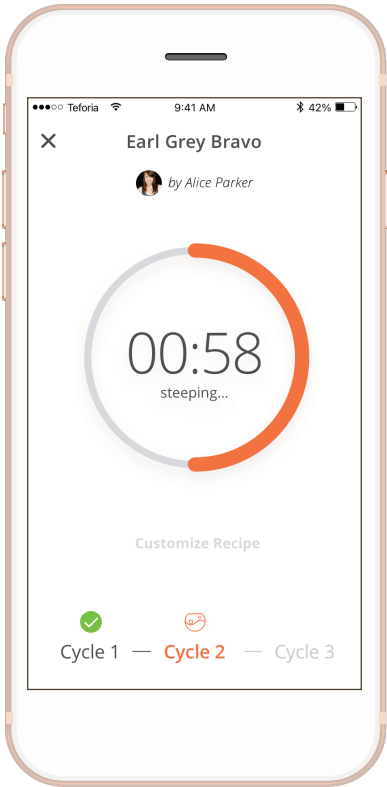
Pulsing red Leaf, Infusing and Carafe Icons indicate an internal error.



Your Tea Maker will reset itself.

The Infuser will empty the water into the Carafe. Empty the Carafe before starting the infusion again.

*If you power your Tea Maker off during this reset, the **lights will continue to pulse** after the Tea Maker is turned on until the resetting process is complete.*



Teforia App

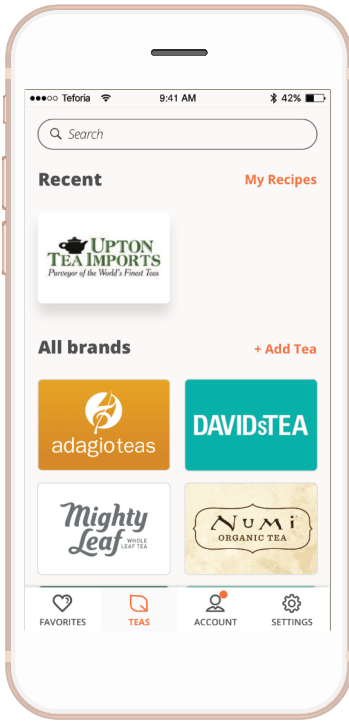
Teforia App is required to steep teas that lack the “Teforia-ready” label. The App will also permit you to customize tea recipes and share them with others.

You may download the Teforia App from the App Store, Google Play or from our website: **Teforia.com**



When you open the Teforia App, it will automatically connect with the nearby Tea Maker.

To receive software updates and new tea recipes, your Tea Maker needs to be connected to a Wi-Fi network. The Teforia App will guide you through this process when you first use it. You may also configure your Wi-Fi connection via the Settings section of the App.

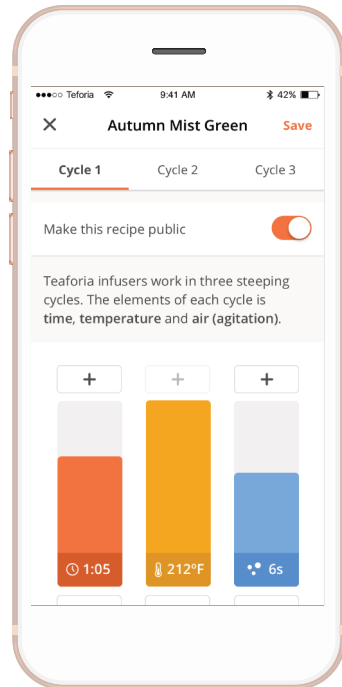


Thousands of recipes

The Teforia App contains steeping recipes for most branded teas. Simply select from thousands of tea options, and infuse perfect tea at a touch of a button.

Make it yours

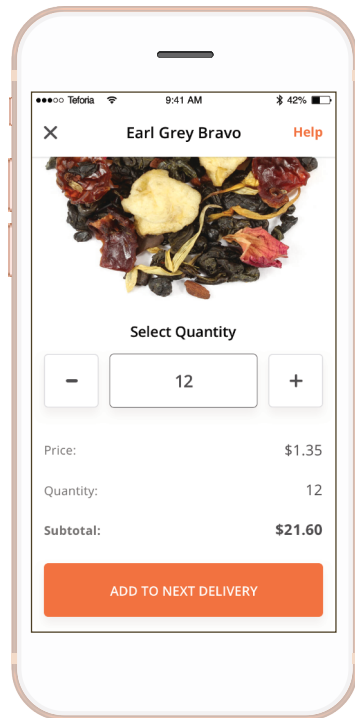
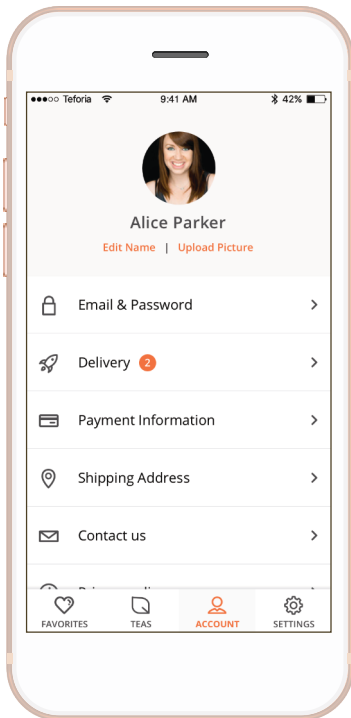
Want to customize a recipe to suit your individual taste? You can easily do this for any tea. Change water temperature, infusion length or agitation amount. Keep your changes private or mark them public to share with others.



Never run out of tea

With our auto-refill program. Select the number of teas you'd like to keep on hand, and receive new shipments automatically that keep perfect pace with your tea drinking habits.

Never worry about having too much tea, or too little. You'll always have the perfect amount. Make adjustments or cancel anytime.



Care & Maintenance

- It is important to remove wet tea leaves from the Infuser soon after infusing. **Leaving wet leaves for long may encourage the growth of mold.**
- To avoid scratches, clean the machine surface with soft cloths.
- Do not use deionized (DI), reverse osmosis (RO), or distilled water.
- Wash the Infuser and the Carafe by hand.
- Use the cleaning brush provided to clean inside the Carafe.
- **Do not place the Infuser or the Carafe in the dishwasher.** Doing so will damage them.
- Please use fragrance-free soap to clean the Infuser, Carafe, and Water Reservoir. Do not use abrasive chemicals or materials.
- Run a Cleaning Cycle once a week using the Teforia cleaning tablet to remove tea oils that build up inside the Infuser.
- Remove scale from internal plumbing once a quarter (more frequently if your water is hard) using the Teforia descaling tablet.

Important Safeguards

Save These Instructions

- Do not use for any purpose other than making tea.
- Allow parts to cool before removing from the Infuser.
- Do not move or lift the Infuser using the Infusion Arm.
- Do not lift the Infusion Arm while Infuser is in use.
- Do not place near a hot burner or heated oven.
- To avoid electric shock, never immerse Infuser in water.
- Always use properly grounded electrical outlets.
- Unplug from outlet when not in use and before cleaning.
- Do not let cord hang over the edge or touch hot surface.
- Do not use if cord shows any sign of damage.
- Do not put foreign objects in any part of Infuser.
- Discontinue use if Infuser malfunctions or needs repair.
- Supervision is advised when used by or near children.
- Alteration or modification to any part of the Infuser, or the use of any part that is not genuine may cause fire, electric shock, or injury.
- Failure to adhere to these rules may void your warranty.

